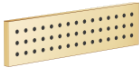


# WATER BAR Concealed body spray FlowReduce - Brushed Durabronze (23kt Gold)

IMO

36 517 979



- HORIZONTAL RAIN, max. flow rate 6 l/min (at 3 bar)
- with anti-scale system
- cover plate 240 x 60 mm
- 1/2" connection
- This product can help a building meet the requirements of Green Building Rating Systems, e.g. LEED®, BREEAM®, DGNB

Fits: IMO, LULU, MADISON, MEM, TARA, CL.1, LISSÉ, VAIA, META, CYO

|  |                                |               |
|--|--------------------------------|---------------|
|  | Brushed Durabronze (23kt Gold) | 36 517 979-28 |
|  | Chrome                         | 36 517 979-00 |
|  | Brushed Platinum               | 36 517 979-06 |
|  | Platinum                       | 36 517 979-08 |
|  | Dark Chrome                    | 36 517 979-19 |
|  | Light Gold                     | 36 517 979-26 |
|  | Brushed Light Gold             | 36 517 979-27 |
|  | Matte Black                    | 36 517 979-33 |
|  | Brushed Bronze                 | 36 517 979-42 |
|  | Brushed Champagne (22kt Gold)  | 36 517 979-46 |
|  | Champagne (22kt Gold)          | 36 517 979-47 |
|  | Brushed Chrome                 | 36 517 979-93 |
|  | Brushed Dark Platinum          | 36 517 979-99 |

## Required miscellaneous

|  |  |
|--|--|
|  | <b>Concealed wall installation box -</b> 35 206 970 90 |
|  | • max. recess depth 173 mm                             |
|  | • min. recess depth 100 mm                             |

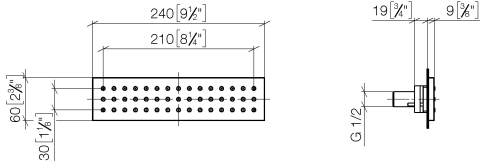
## Recommended miscellaneous

|  |  |
|--|--|
|  | <b>xGRID Attachment set for integrating in the dry wall construction -</b> 12 340 970 90 |
|--|--|

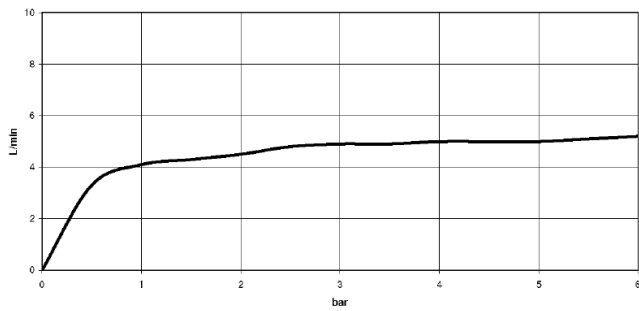
## Required miscellaneous

|  |  |
|--|--|
|  | <b>xGRID Installation track 555 mm -</b> 12 360 970 90 |
|--|--|

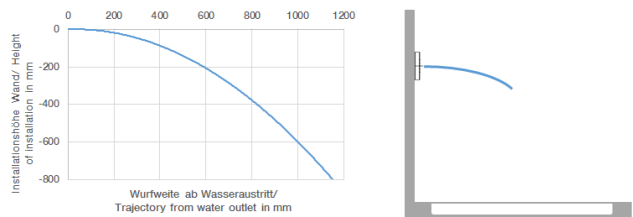
36 517 979  
mm [inches]



Flow rate chart



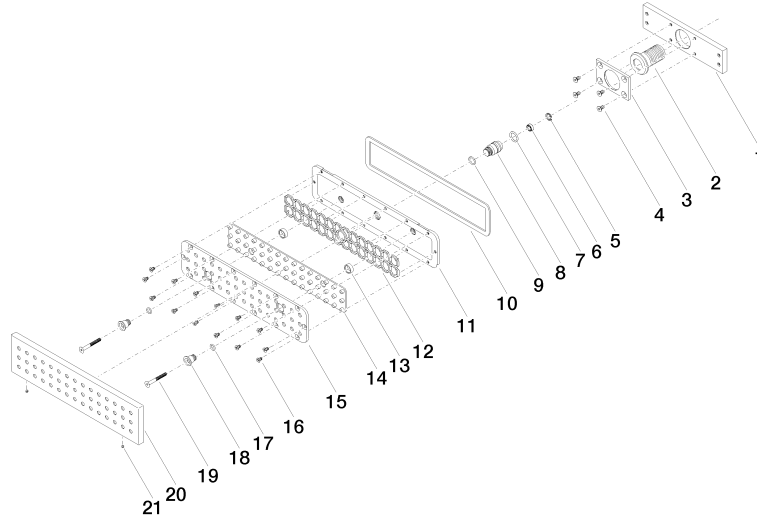
Trajectory diagram



Certificates

WRAS\_1304001. LGA\_19489.

36 517 979





# WATER BAR Concealed body spray FlowReduce - Brushed Durabrass (23kt Gold)

IMO

36 517 979

## Spare parts list

| No.  | Item Number        | Name         | Quantity used | Delivery time |
|--|--------------------|--------------|---------------|---------------|
| 1  | 09 11 02 137 90    | holder       | 1             | 2             |
| 2  | 09 24 04 247 20 90 | connection   | 1             | 2             |
| 3  | 09 11 02 138 90    | plate        | 1             | 2             |
| 4  | 09 30 30 116 90    | screw        | 4             | 2             |
| 5  | 09 16 01 016 90    | ring         | 1             | 2             |
| 6  | 90 23 01 032 00 90 | flow reducer | 1             | 2             |
| 7  | 09 14 10 003 90    | seal         | 1             | 2             |
| 8  | 09 24 04 248 90    | nipple       | 1             | 2             |
| 9  | 09 14 10 042 90    | seal         | 1             | 2             |
| 10   | 09 14 03 133 90    | seal         | 1             | 2             |
| 11   | 09 11 02 135-28    | base         | 1             | -             |
| Spare part can no longer be ordered, please order the replacement item |                    |              |               |               |
| 12   | 09 17 97 058 90    | holder       | 1             | 2             |
| 13   | 09 28 10 142 20 90 | ring         | 2             | 2             |
| 14   | 09 12 01 076 90    | insert       | 1             | 60            |
| 15   | 09 11 02 136-00    | cover        | 1             | 60            |
| 16   | 09 30 30 163 90    | screw        | 14            | 2             |
| 17   | 09 14 10 132 90    | seal         | 2             | 2             |
| 18   | 09 24 04 249-28    | nipple       | 2             | -             |
| Spare part can no longer be ordered, please order the replacement item |                    |              |               |               |
| 19   | 09 30 30 164 90    | screw        | 2             | 2             |
| 20   | 09 27 99 001-28    | rosette      | 1             | 20            |
| 21   | 09 31 11 006 90    | pin          | 2             | 2             |